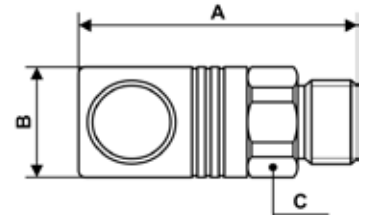


## METAL SAFETY QUICK COUPLINGS - CSM 06



Parallel male thread coupling

Profile : ISO 6150C



<b>Min / Max operating pressure</b> 0 / 16 bar	<b>Flow rate at 6 bar</b> 833 l/min	<b>ID passage</b> 6 mm	<b>Min. / Max temperature</b> -15 / 70 °C
---	--	---------------------------	--

Part number	Male thread	Dim. A (mm)	Dim. B (mm)	Dim. C (mm)
CSM 061151	G1/4	54.5	22	20
CSM 061152	G3/8	55.5	22	20
CSM 061153	G1/2	57.5	22	23